



深圳市百康光电有限公司

Bicom Optics

---

# 规 格 书

## SPECIFICATION

品 名

Description: LED Lens

型 号

Part No.: BK-LED-1720ZZ

材 料

Material: PMMA

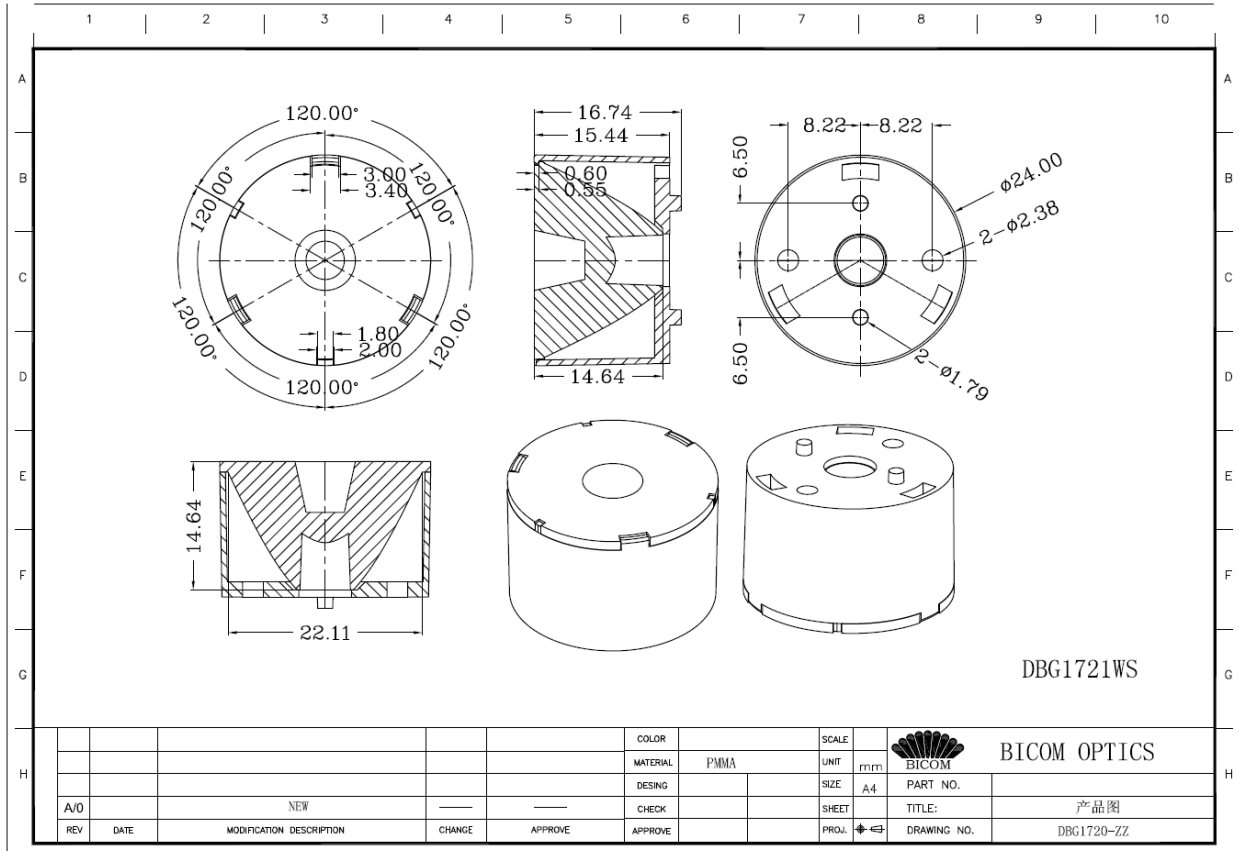
Made by: Ann

## 透 镜 规 格

## Lens Spec.

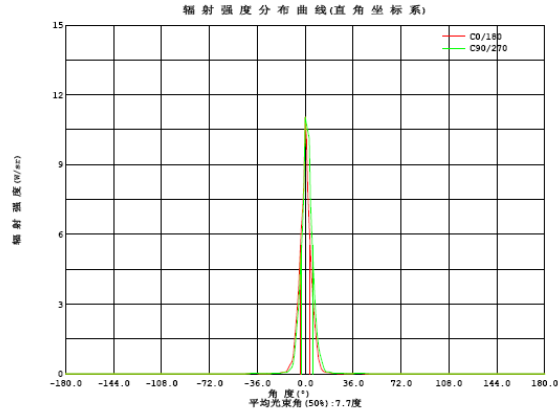
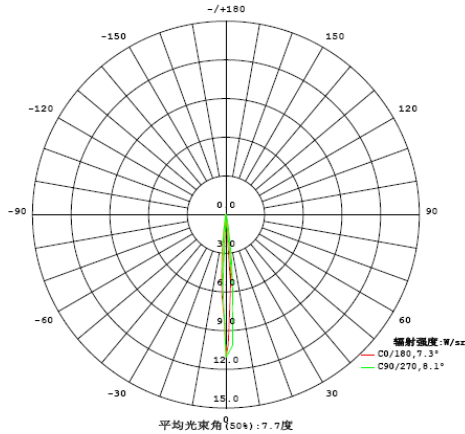
产品型号 Part Number	产品图片 Picture	产品尺寸 Dimension	适配 LED 种类 LED type	角度 Angle
BK-LED-1720ZZ		直径 Dia: $\Phi 24.00\text{mm}$ 高度 Height: 16.74mm	OSRAM 4715	7.7°

### 尺寸图 Drawing





# 光学检验报告 Optical Test Report



辐射强度数据: (角度°, 强度W/sr) C0/180

角度	强度	角度	强度	角度	强度	角度	强度	角度	强度	角度	强度
-180.0	0.0000	-117.0	0.0005	-54.0	0.0054	9.0	1.130	72.0	0.0019	135.0	0.0000
-177.0	0.0034	-114.0	0.0005	-51.0	0.0061	12.0	0.2343	75.0	0.0017	138.0	0.0001
-174.0	0.0100	-111.0	0.0005	-48.0	0.0074	15.0	0.0715	78.0	0.0015	141.0	0.0001
-171.0	0.0106	-108.0	0.0006	-45.0	0.0113	18.0	0.0555	81.0	0.0013	144.0	0.0001
-168.0	0.0078	-105.0	0.0006	-42.0	0.0223	21.0	0.0252	84.0	0.0011	147.0	0.0001
-165.0	0.0042	-102.0	0.0007	-39.0	0.0253	24.0	0.0199	87.0	0.0009	150.0	0.0001
-162.0	0.0019	-99.0	0.0007	-36.0	0.0202	27.0	0.0167	90.0	0.0009	153.0	0.0001
-159.0	0.0009	-96.0	0.0007	-33.0	0.0149	30.0	0.0180	93.0	0.0008	156.0	0.0001
-156.0	0.0005	-93.0	0.0007	-30.0	0.0177	33.0	0.0158	96.0	0.0008	159.0	0.0001
-153.0	0.0004	-90.0	0.0007	-27.0	0.0186	36.0	0.0206	99.0	0.0008	162.0	0.0002
-150.0	0.0003	-87.0	0.0008	-24.0	0.0216	39.0	0.0267	102.0	0.0008	165.0	0.0004
-147.0	0.0003	-84.0	0.0010	-21.0	0.0269	42.0	0.0225	105.0	0.0007	168.0	0.0009
-144.0	0.0003	-81.0	0.0012	-18.0	0.0593	45.0	0.0122	108.0	0.0006	171.0	0.0015
-141.0	0.0003	-78.0	0.0014	-15.0	0.0774	48.0	0.0086	111.0	0.0006	174.0	0.0017
-138.0	0.0002	-75.0	0.0016	-12.0	0.3191	51.0	0.0073	114.0	0.0006	177.0	0.0006
-135.0	0.0002	-72.0	0.0018	-9.0	0.7371	54.0	0.0063	117.0	0.0006	180.0	0
-132.0	0.0001	-69.0	0.0021	-6.0	2.817	57.0	0.0065	120.0	0.0008		
-129.0	0.0002	-66.0	0.0024	-3.0	6.162	60.0	0.0056	123.0	0.0009		
-126.0	0.0003	-63.0	0.0031	0.0	11.03	63.0	0.0034	126.0	0.0005		
-123.0	0.0005	-60.0	0.0042	3.0	6.373	66.0	0.0027	129.0	0.0003		
-120.0	0.0005	-57.0	0.0050	6.0	3.053	69.0	0.0022	132.0	0.0001		

### 电学参数:

工作电压: 3.128 V      工作电流: 0.3499 A  
电功率: 1.094 W      功率因数: 1.000

### 光学参数(测试距离:1.900m):

总辐射通量:  $\Phi_t = 383.84$  mW

平均辐射扩散角:  $\theta(25\%): 12.7^\circ$      $\theta(50\%): 7.7^\circ$      $\theta(75\%): 3.6^\circ$      $\theta(10\%): 17.7^\circ$

C0/180:  $\theta(25\%): 12.5^\circ$      $\theta(50\%): 7.3^\circ$      $\theta(75\%): 2.7^\circ$      $\theta(10\%): 17.4^\circ$

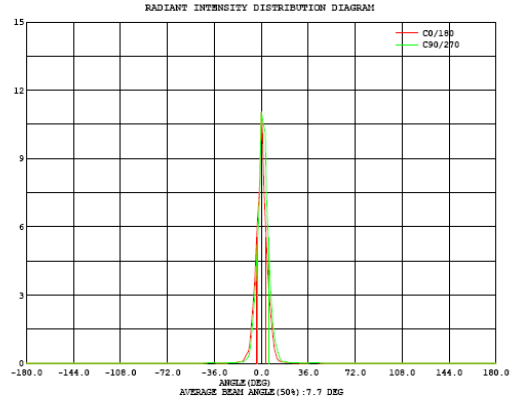
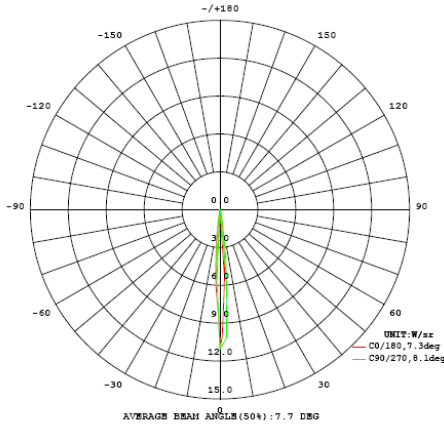
C0/180  $I_{max} = 11.03$  W/sr ( $G=0.0^\circ$ )  $I_o = 11.03$  W/sr

C角度范围: 0度 - 360度  
C角度间隔: 90.0度  
测试速度: 快速  
环境温度: 25°C  
测试人员: \_\_\_\_\_ Mc.  
测试日期: 2014-02-13

Y角度范围: 0度 - 180度  
Y角度间隔: 1.0度  
测试系统: 远方(EVERFINE)GO-R5000\_V2系统 V2.0.284  
环境湿度: 40%  
测试距离: 1.900米 [K=0.6137]  
备注:



光学检验报告  
Optical Test Report



Intensity data: (deg , W/sr) C0/180

A	I	A	I	A	I	A	I	A	I	A	I
-180.0	0.0000	-117.0	0.0005	-54.0	0.0054	9.0	1.130	72.0	0.0019	135.0	0.0000
-177.0	0.0034	-114.0	0.0005	-51.0	0.0061	12.0	0.2343	75.0	0.0017	138.0	0.0001
-174.0	0.0100	-111.0	0.0005	-48.0	0.0074	15.0	0.0715	78.0	0.0015	141.0	0.0001
-171.0	0.0106	-108.0	0.0006	-45.0	0.0113	18.0	0.0555	81.0	0.0013	144.0	0.0001
-168.0	0.0078	-105.0	0.0006	-42.0	0.0223	21.0	0.0252	84.0	0.0011	147.0	0.0001
-165.0	0.0042	-102.0	0.0007	-39.0	0.0253	24.0	0.0199	87.0	0.0009	150.0	0.0001
-162.0	0.0019	-99.0	0.0007	-36.0	0.0202	27.0	0.0167	90.0	0.0009	153.0	0.0001
-159.0	0.0009	-96.0	0.0007	-33.0	0.0149	30.0	0.0180	93.0	0.0008	156.0	0.0001
-156.0	0.0005	-93.0	0.0007	-30.0	0.0177	33.0	0.0158	96.0	0.0008	159.0	0.0001
-153.0	0.0004	-90.0	0.0007	-27.0	0.0186	36.0	0.0206	99.0	0.0008	162.0	0.0002
-150.0	0.0003	-87.0	0.0008	-24.0	0.0216	39.0	0.0267	102.0	0.0008	165.0	0.0004
-147.0	0.0003	-84.0	0.0010	-21.0	0.0269	42.0	0.0225	105.0	0.0007	168.0	0.0009
-144.0	0.0003	-81.0	0.0012	-18.0	0.0593	45.0	0.0122	108.0	0.0006	171.0	0.0015
-141.0	0.0003	-78.0	0.0014	-15.0	0.0774	48.0	0.0086	111.0	0.0006	174.0	0.0017
-138.0	0.0002	-75.0	0.0016	-12.0	0.3191	51.0	0.0073	114.0	0.0006	177.0	0.0006
-135.0	0.0002	-72.0	0.0018	-9.0	0.7371	54.0	0.0063	117.0	0.0006	180.0	0
-132.0	0.0001	-69.0	0.0021	-6.0	2.817	57.0	0.0065	120.0	0.0008		
-129.0	0.0002	-66.0	0.0024	-3.0	6.162	60.0	0.0056	123.0	0.0009		
-126.0	0.0003	-63.0	0.0031	0.0	11.03	63.0	0.0034	126.0	0.0005		
-123.0	0.0005	-60.0	0.0042	3.0	6.373	66.0	0.0027	129.0	0.0003		
-120.0	0.0005	-57.0	0.0050	6.0	3.053	69.0	0.0022	132.0	0.0001		

Electricity Parameter:

Voltage : 3.128 V Current : 0.3499 A  
Power P: 1.094 W Power Factor: 1.000

Optical Parameter (Distance:1.900m) :

Radiant flux = 383.84 mW

Avg. Beam angle: @ (25%):12.7deg @ (50%):7.7deg @ (75%):3.6deg @ (10%):17.7deg  
C0/180: @ (25%):12.5deg @ (50%):7.3deg @ (75%):2.7deg @ (10%):17.4deg  
C0/180 I<sub>max</sub> = 11.03 W/sr (G=0.0deg) I<sub>o</sub> = 11.03 W/sr

C Range: 0 - 360DEG  
C Interval: 90.0DEG  
Test Speed: HIGH  
Temperature:25DEG  
Operators: \_\_\_\_\_ Mc.  
Test Date:2014-02-13

γ Range: 0 - 180DEG  
γ Interval: 1.0DEG  
Test System:EVERFINE GO-R5000\_V2 SYSTEM V2.0.284  
Humidity:40%  
Test Distance:1.900m [K=0.6137]  
Remarks:

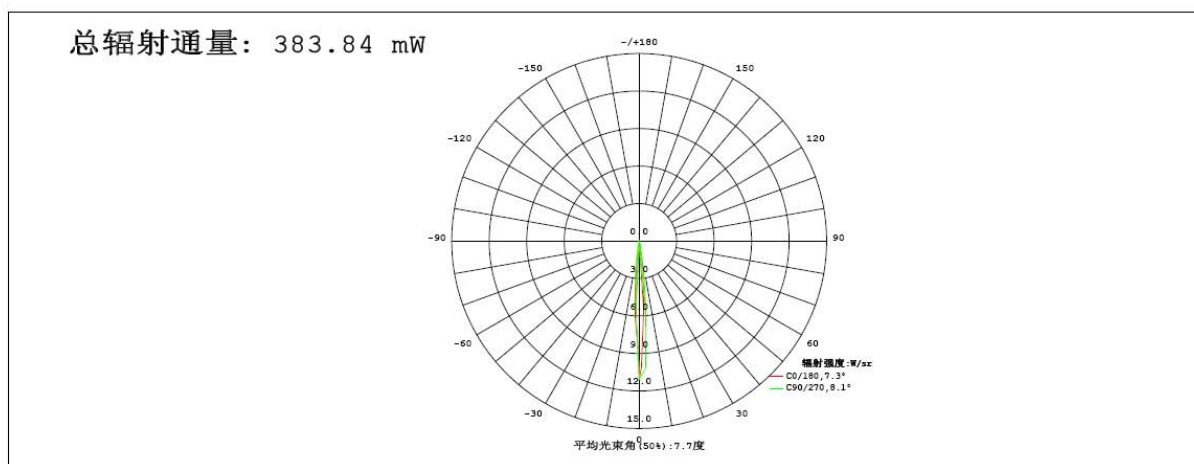


### 光学检验报告

### Optical Test Report

### 辐射通量测试报告

光源型号: 1720配1721外壳		
功率: 1W	电源电压: 3V	额定工作电压: 3V
制造厂商: 深圳市百康光电有限公司		



$\gamma$	C0	C90	C180	C270				$\gamma(^{\circ})$	$\phi_{环}$	$\phi_{总}$	%
10	0.6475	1.168	0.5078	0.2797				0- 10	0.2892	0.2892	75.4
20	0.0299	0.0447	0.0292	0.0251				10- 20	0.0440	0.3332	86.8
30	0.0180	0.0184	0.0177	0.0176				20- 30	0.0098	0.3431	89.4
40	0.0261	0.0305	0.0238	0.0237				30- 40	0.0127	0.3558	92.7
50	0.0076	0.0084	0.0065	0.0070				40- 50	0.0113	0.3670	95.6
60	0.0056	0.0065	0.0042	0.0046				50- 60	0.0055	0.3725	97.1
70	0.0021	0.0023	0.0020	0.0025				60- 70	0.0033	0.3758	97.9
80	0.0013	0.0014	0.0012	0.0014				70- 80	0.0018	0.3777	98.4
90	0.0009	0.0008	0.0007	0.0009				80- 90	0.0011	0.3788	98.7
100	0.0008	0.0007	0.0007	0.0008				90-100	0.0008	0.3797	98.9
110	0.0006	0.0007	0.0006	0.0007				100-110	0.0007	0.3804	99.1
120	0.0008	0.0019	0.0005	0.0044				110-120	0.0009	0.3813	99.3
130	0.0002	0.0004	0.0002	0.0001				120-130	0.0010	0.3823	99.6
140	0.0001	0.0001	0.0003	0.0003				130-140	0.0001	0.3824	99.6
150	0.0001	0.0001	0.0003	0.0004				140-150	0.0001	0.3825	99.7
160	0.0001	0.0001	0.0011	0.0013				150-160	0.0001	0.3827	99.7
170	0.0013	0.0012	0.0099	0.0104				160-170	0.0007	0.3833	99.9
180	0	0	0.0000	0.0000				170-180	0.0005	0.3838	100
单位: $^{\circ}$	辐射强度: W/SR								单位: W		

C角度范围: 0度 - 360度  
 C角度间隔: 90.0度  
 测试速度: 快速  
 环境温度: 25°C  
 测试人员: \_\_\_\_\_ Mc.  
 测试日期: 2014-02-13

$\gamma$ 角度范围: 0度 - 180度  
 $\gamma$ 角度间隔: 1.0度  
 测试系统: 远方(EVERFINE)GO-R5000\_V2系统 V2.0.284  
 环境湿度: 40%  
 测试距离: 1.900米 [K=0.6137]  
 备注:

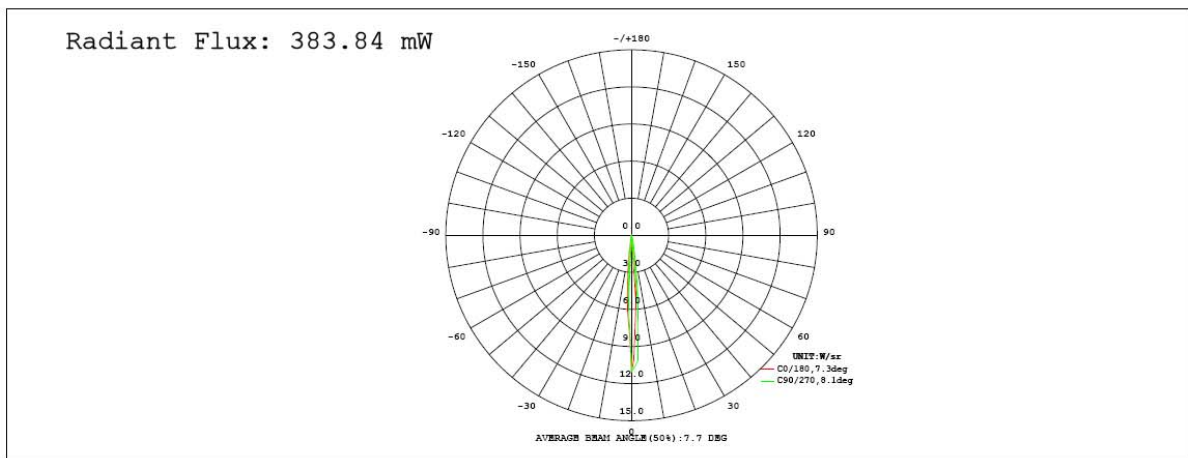


### 光学检验报告

### Optical Test Report

#### RADIANT FLUX TEST REPORT

MODEL: 1720配1721外壳		
POWER: 1W	VOLTAGE: 3V	WORKING VOLTAGE: 3V
MANUFACTURER: 深圳市百康光电有限公司		



$\gamma$	C0	C90	C180	C270					$\gamma$	$\Phi$ zone	$\Phi$ total	%
10	0.6475	1.168	0.5078	0.2797					0- 10	0.2892	0.2892	75.4
20	0.0299	0.0447	0.0292	0.0251					10- 20	0.0440	0.3332	86.8
30	0.0180	0.0184	0.0177	0.0176					20- 30	0.0098	0.3431	89.4
40	0.0261	0.0305	0.0238	0.0237					30- 40	0.0127	0.3558	92.7
50	0.0076	0.0084	0.0065	0.0070					40- 50	0.0113	0.3670	95.6
60	0.0056	0.0065	0.0042	0.0046					50- 60	0.0055	0.3725	97.1
70	0.0021	0.0023	0.0020	0.0025					60- 70	0.0033	0.3758	97.9
80	0.0013	0.0014	0.0012	0.0014					70- 80	0.0018	0.3777	98.4
90	0.0009	0.0008	0.0007	0.0009					80- 90	0.0011	0.3788	98.7
100	0.0008	0.0007	0.0007	0.0008					90-100	0.0008	0.3797	98.9
110	0.0006	0.0007	0.0006	0.0007					100-110	0.0007	0.3804	99.1
120	0.0008	0.0019	0.0005	0.0044					110-120	0.0009	0.3813	99.3
130	0.0002	0.0004	0.0002	0.0001					120-130	0.0010	0.3823	99.6
140	0.0001	0.0001	0.0003	0.0003					130-140	0.0001	0.3824	99.6
150	0.0001	0.0001	0.0003	0.0004					140-150	0.0001	0.3825	99.7
160	0.0001	0.0001	0.0011	0.0013					150-160	0.0001	0.3827	99.7
170	0.0013	0.0012	0.0099	0.0104					160-170	0.0007	0.3833	99.9
180	0	0	0.0000	0.0000					170-180	0.0005	0.3838	100
DEG	INTENSITY:W/sr									UNIT:W		

C Range: 0 - 360DEG  
 C Interval: 90.0DEG  
 Test Speed: HIGH  
 Temperature: 25DEG  
 Operators: \_\_\_\_\_ Mc.  
 Test Date: 2014-02-13

$\gamma$  Range: 0 - 180DEG  
 $\gamma$  Interval: 1.0DEG  
 Test System: EVERFINE GO-R5000\_V2 SYSTEM V2.0.284  
 Humidity: 40%  
 Test Distance: 1.900m [K=0.6137]  
 Remarks: