



深圳市百康光电有限公司

Bicom Optics

规 格 书

SPECIFICATION

品 名

Description: LED Lens

型 号

Part No.: BK-LED-1733ZZ

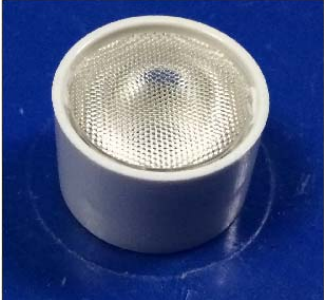
材 料

Material: PMMA

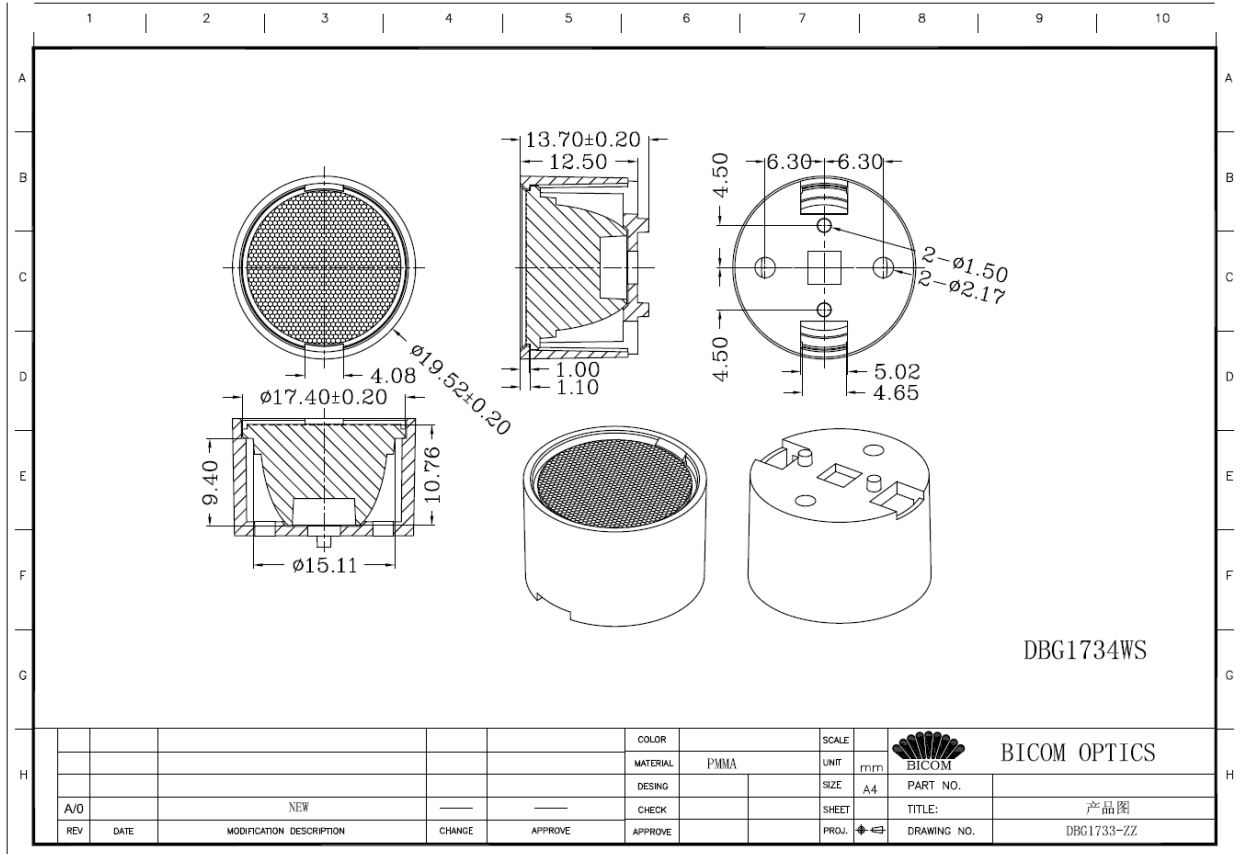
Made by: Ann

透 镜 规 格

Lens Spec.

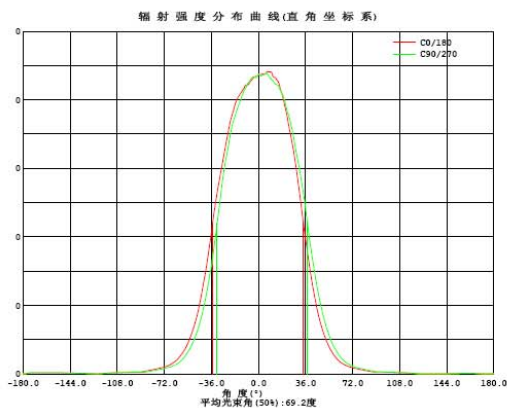
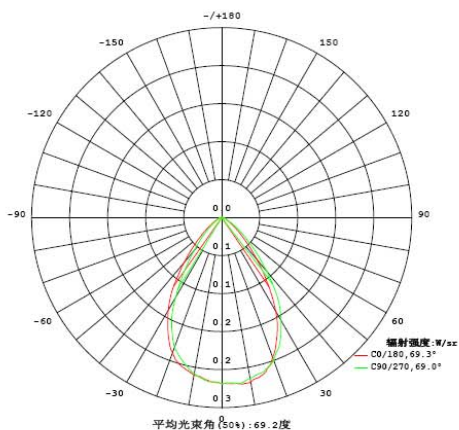
产品型号 Part Number	产品图片 Picture	产品尺寸 Dimension	适配 LED 种类 LED type	角度 Angle
BK-LED-1733ZZ		直径 Dia: $\Phi 19.52\text{mm}$ 高度 Height: 13.70mm	OSRAM 4715	69.2°

尺寸图 Drawing





光学检验报告 Optical Test Report



辐射强度数据: (角度°, 强度W/sr) C0/180

角度	强度	角度	强度	角度	强度	角度	强度	角度	强度	角度	强度
-180.0	0.0000	-117.0	0.0006	-54.0	0.0268	9.0	0.2644	72.0	0.0054	135.0	0.0001
-177.0	0.0005	-114.0	0.0008	-51.0	0.0357	12.0	0.2594	75.0	0.0046	138.0	0.0002
-174.0	0.0009	-111.0	0.0010	-48.0	0.0465	15.0	0.2561	78.0	0.0038	141.0	0.0002
-171.0	0.0011	-108.0	0.0012	-45.0	0.0615	18.0	0.2454	81.0	0.0032	144.0	0.0002
-168.0	0.0011	-105.0	0.0013	-42.0	0.0794	21.0	0.2304	84.0	0.0025	147.0	0.0003
-165.0	0.0011	-102.0	0.0014	-39.0	0.1000	24.0	0.2125	87.0	0.0019	150.0	0.0003
-162.0	0.0011	-99.0	0.0015	-36.0	0.1235	27.0	0.1941	90.0	0.0016	153.0	0.0004
-159.0	0.0010	-96.0	0.0016	-33.0	0.1484	30.0	0.1707	93.0	0.0016	156.0	0.0004
-156.0	0.0010	-93.0	0.0016	-30.0	0.1692	33.0	0.1440	96.0	0.0015	159.0	0.0004
-153.0	0.0010	-90.0	0.0017	-27.0	0.1881	36.0	0.1178	99.0	0.0015	162.0	0.0004
-150.0	0.0009	-87.0	0.0023	-24.0	0.2067	39.0	0.0946	102.0	0.0014	165.0	0.0004
-147.0	0.0008	-84.0	0.0030	-21.0	0.2237	42.0	0.0730	105.0	0.0013	168.0	0.0003
-144.0	0.0007	-81.0	0.0037	-18.0	0.2358	45.0	0.0558	108.0	0.0012	171.0	0.0002
-141.0	0.0006	-78.0	0.0044	-15.0	0.2434	48.0	0.0423	111.0	0.0010	174.0	0.0001
-138.0	0.0005	-75.0	0.0051	-12.0	0.2484	51.0	0.0319	114.0	0.0008	177.0	0.0001
-135.0	0.0004	-72.0	0.0060	-9.0	0.2531	54.0	0.0238	117.0	0.0005	180.0	0.0000
-132.0	0.0004	-69.0	0.0073	-6.0	0.2565	57.0	0.0177	120.0	0.0003		
-129.0	0.0003	-66.0	0.0091	-3.0	0.2602	60.0	0.0132	123.0	0.0001		
-126.0	0.0002	-63.0	0.0117	0.0	0.2622	63.0	0.0101	126.0	0.0001		
-123.0	0.0002	-60.0	0.0153	3.0	0.2625	66.0	0.0079	129.0	0.0001		
-120.0	0.0004	-57.0	0.0202	6.0	0.2638	69.0	0.0064	132.0	0.0001		

电学参数:

工作电压: 3.156 V 工作电流: 0.3499 A
电功率: 1.104 W 功率因数: 1.000

光学参数 (测试距离: 1.900m):

总辐射通量: $\Phi_t = 357.00 \text{ mW}$

平均辐射扩散角: $\theta(25\%): 87.3^\circ$ $\theta(50\%): 69.2^\circ$ $\theta(75\%): 51.6^\circ$ $\theta(10\%): 107.1^\circ$
C0/180: $\theta(25\%): 87.3^\circ$ $\theta(50\%): 69.3^\circ$ $\theta(75\%): 51.6^\circ$ $\theta(10\%): 107.0^\circ$
C0/180 $I_{max} = 0.2648 \text{ W/sr}$ ($G=7.0^\circ$) $I_o = 0.2622 \text{ W/sr}$

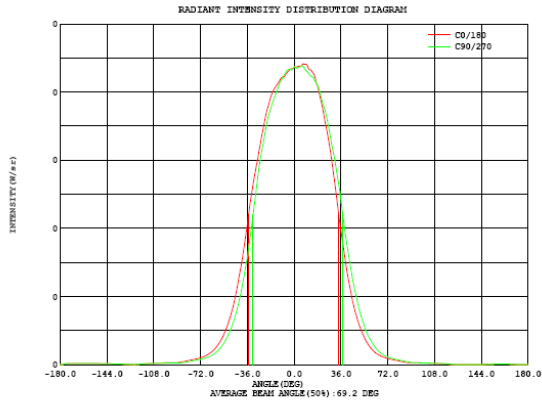
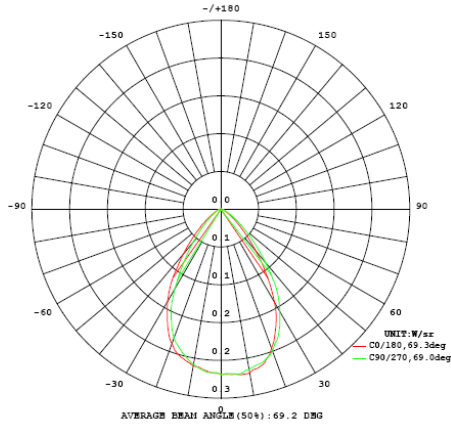
C角度范围: 0度 - 360度
C角度间隔: 90.0度
测试速度: 快速
环境温度: 25°C
测试人员: _____ Mc.
测试日期: 2014-02-13

Y角度范围: 0度 - 180度
Y角度间隔: 1.0度
测试系统: 远方(EVERFINE)GO-R5000_V2系统 V2.0.284
环境湿度: 40%
测试距离: 1.900米 [K=0.6137]
备注:



光学检验报告

Optical Test Report



Intensity data:(deg , W/sr) C0/180

A	I	A	I	A	I	A	I	A	I	A	I
-180.0	0.0000	-117.0	0.0006	-54.0	0.0268	9.0	0.2644	72.0	0.0054	135.0	0.0001
-177.0	0.0005	-114.0	0.0008	-51.0	0.0357	12.0	0.2594	75.0	0.0046	138.0	0.0002
-174.0	0.0009	-111.0	0.0010	-48.0	0.0465	15.0	0.2561	78.0	0.0038	141.0	0.0002
-171.0	0.0011	-108.0	0.0012	-45.0	0.0615	18.0	0.2454	81.0	0.0032	144.0	0.0002
-168.0	0.0011	-105.0	0.0013	-42.0	0.0794	21.0	0.2304	84.0	0.0025	147.0	0.0003
-165.0	0.0011	-102.0	0.0014	-39.0	0.1000	24.0	0.2125	87.0	0.0019	150.0	0.0003
-162.0	0.0011	-99.0	0.0015	-36.0	0.1235	27.0	0.1941	90.0	0.0016	153.0	0.0004
-159.0	0.0010	-96.0	0.0016	-33.0	0.1484	30.0	0.1707	93.0	0.0016	156.0	0.0004
-156.0	0.0010	-93.0	0.0016	-30.0	0.1692	33.0	0.1440	96.0	0.0015	159.0	0.0004
-153.0	0.0010	-90.0	0.0017	-27.0	0.1881	36.0	0.1178	99.0	0.0015	162.0	0.0004
-150.0	0.0009	-87.0	0.0023	-24.0	0.2067	39.0	0.0946	102.0	0.0014	165.0	0.0004
-147.0	0.0008	-84.0	0.0030	-21.0	0.2237	42.0	0.0730	105.0	0.0013	168.0	0.0003
-144.0	0.0007	-81.0	0.0037	-18.0	0.2358	45.0	0.0558	108.0	0.0012	171.0	0.0002
-141.0	0.0006	-78.0	0.0044	-15.0	0.2434	48.0	0.0423	111.0	0.0010	174.0	0.0001
-138.0	0.0005	-75.0	0.0051	-12.0	0.2484	51.0	0.0319	114.0	0.0008	177.0	0.0001
-135.0	0.0004	-72.0	0.0060	-9.0	0.2531	54.0	0.0238	117.0	0.0005	180.0	0.0000
-132.0	0.0004	-69.0	0.0073	-6.0	0.2565	57.0	0.0177	120.0	0.0003		
-129.0	0.0003	-66.0	0.0091	-3.0	0.2602	60.0	0.0132	123.0	0.0001		
-126.0	0.0002	-63.0	0.0117	0.0	0.2622	63.0	0.0101	126.0	0.0001		
-123.0	0.0002	-60.0	0.0153	3.0	0.2625	66.0	0.0079	129.0	0.0001		
-120.0	0.0004	-57.0	0.0202	6.0	0.2638	69.0	0.0064	132.0	0.0001		

Electricity Parameter:

Voltage : 3.156 V Current : 0.3499 A
 Power P: 1.104 W Power Factor: 1.000

Optical Parameter(Distance:1.900m) :

Radiant flux = 357.00 mW

Avg. Beam angle: @(25%):87.3deg @(50%):69.2deg @(75%):51.6deg @(10%):107.1deg
 C0/180: @(25%):87.3deg @(50%):69.3deg @(75%):51.6deg @(10%):107.0deg
 C0/180 Imax = 0.2648 W/sr (G=7.0deg) Io = 0.2622 W/sr

C Range: 0 - 360DEG
 C Interval: 90.0DEG
 Test Speed: HIGH
 Temperature:25DEG
 Operators: Mc.
 Test Date:2014-02-13

γ Range: 0 - 180DEG
 γ Interval: 1.0DEG
 Test System:EVERFINE GO-R5000_V2 SYSTEM V2.0.284
 Humidity:40%
 Test Distance:1.900m [K=0.6137]
 Remarks:

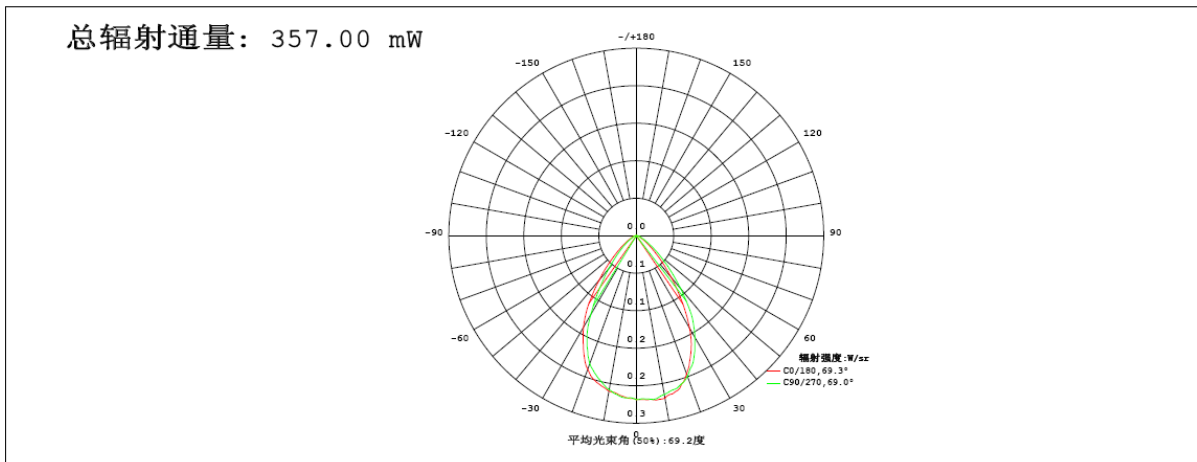


光学检验报告

Optical Test Report

辐射通量测试报告

光源型号: DB1733配1734W		
功率: 1W	电源电压: 3V	额定工作电压: 3V
制造厂商: 深圳市百康光电有限公司		



γ	C0	C90	C180	C270				$\gamma(^{\circ})$	$\Phi_{环}$	$\Phi_{总}$	%
10	0.2639	0.2578	0.2525	0.2499				0- 10	0.0247	0.0247	6.93
20	0.2352	0.2395	0.2271	0.2181				10- 20	0.0691	0.0939	26.3
30	0.1707	0.1877	0.1692	0.1461				20- 30	0.0925	0.1864	52.2
40	0.0870	0.1110	0.0926	0.0690				30- 40	0.0798	0.2662	74.6
50	0.0350	0.0489	0.0391	0.0278				40- 50	0.0465	0.3127	87.6
60	0.0132	0.0192	0.0153	0.0107				50- 60	0.0217	0.3344	93.7
70	0.0060	0.0078	0.0068	0.0053				60- 70	0.0096	0.3440	96.4
80	0.0034	0.0043	0.0039	0.0029				70- 80	0.0052	0.3492	97.8
90	0.0016	0.0019	0.0017	0.0015				80- 90	0.0028	0.3520	98.6
100	0.0014	0.0015	0.0015	0.0014				90-100	0.0017	0.3536	99.1
110	0.0010	0.0012	0.0011	0.0010				100-110	0.0014	0.3550	99.4
120	0.0003	0.0004	0.0004	0.0003				110-120	0.0007	0.3557	99.6
130	0.0001	0.0001	0.0003	0.0004				120-130	0.0002	0.3559	99.7
140	0.0002	0.0001	0.0006	0.0007				130-140	0.0002	0.3561	99.8
150	0.0003	0.0003	0.0009	0.0009				140-150	0.0003	0.3564	99.8
160	0.0004	0.0005	0.0010	0.0011				150-160	0.0003	0.3567	99.9
170	0.0002	0.0002	0.0011	0.0011				160-170	0.0002	0.3569	100
180	0.0000	0.0000	0.0000	0.0000				170-180	0.0000	0.3570	100
单位: $^{\circ}$	辐射强度: W/sr								单位: W		

C角度范围: 0度 - 360度
 C角度间隔: 90.0度
 测试速度: 快速
 环境温度: 25°C
 测试人员: _____ Mc.
 测试日期: 2014-02-13

γ 角度范围: 0度 - 180度
 γ 角度间隔: 1.0度
 测试系统: 远方 (EVERFINE) GO-R5000_V2系统 V2.0.284
 环境湿度: 40%
 测试距离: 1.900米 [K=0.6137]
 备注:

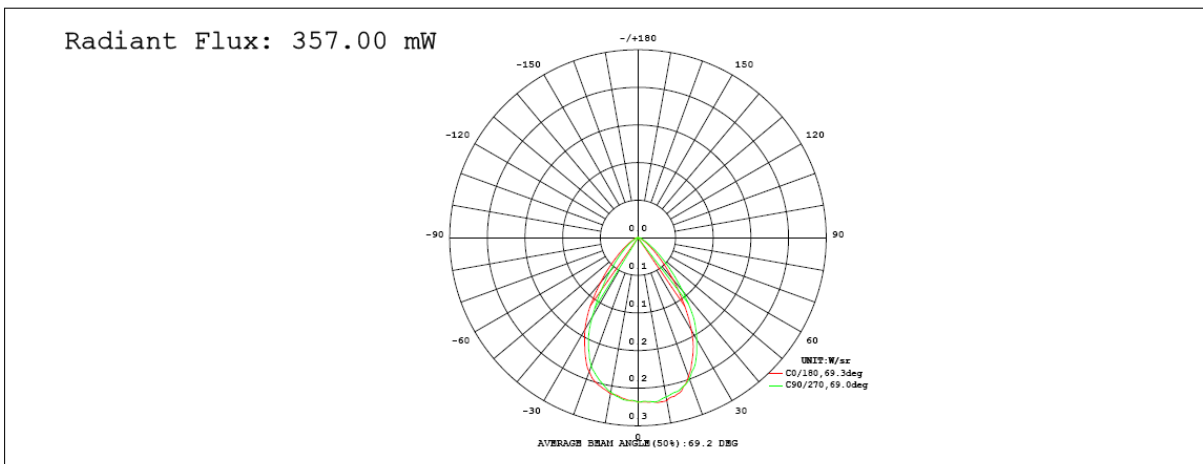


光学检验报告

Optical Test Report

RADIANT FLUX TEST REPORT

MODEL: DB1733配1734W		
POWER: 1W	VOLTAGE: 3V	WORKING VOLTAGE: 3V
MANUFACTURER: 深圳市百康光电有限公司		



γ	C0	C90	C180	C270				γ	Φ zone	Φ total	%
10	0.2639	0.2578	0.2525	0.2499				0- 10	0.0247	0.0247	6.93
20	0.2352	0.2395	0.2271	0.2181				10- 20	0.0691	0.0939	26.3
30	0.1707	0.1877	0.1692	0.1461				20- 30	0.0925	0.1864	52.2
40	0.0870	0.1110	0.0926	0.0690				30- 40	0.0798	0.2662	74.6
50	0.0350	0.0489	0.0391	0.0278				40- 50	0.0465	0.3127	87.6
60	0.0132	0.0192	0.0153	0.0107				50- 60	0.0217	0.3344	93.7
70	0.0060	0.0078	0.0068	0.0053				60- 70	0.0096	0.3440	96.4
80	0.0034	0.0043	0.0039	0.0029				70- 80	0.0052	0.3492	97.8
90	0.0016	0.0019	0.0017	0.0015				80- 90	0.0028	0.3520	98.6
100	0.0014	0.0015	0.0015	0.0014				90-100	0.0017	0.3536	99.1
110	0.0010	0.0012	0.0011	0.0010				100-110	0.0014	0.3550	99.4
120	0.0003	0.0004	0.0004	0.0003				110-120	0.0007	0.3557	99.6
130	0.0001	0.0001	0.0003	0.0004				120-130	0.0002	0.3559	99.7
140	0.0002	0.0001	0.0006	0.0007				130-140	0.0002	0.3561	99.8
150	0.0003	0.0003	0.0009	0.0009				140-150	0.0003	0.3564	99.8
160	0.0004	0.0005	0.0010	0.0011				150-160	0.0003	0.3567	99.9
170	0.0002	0.0002	0.0011	0.0011				160-170	0.0002	0.3569	100
180	0.0000	0.0000	0.0000	0.0000				170-180	0.0000	0.3570	100
DEG	INTENSITY:W/sr								UNIT:W		

C Range: 0 - 360DEG
 C Interval: 90.0DEG
 Test Speed: HIGH
 Temperature:25DEG
 Operators: _____ Mc.
 Test Date:2014-02-13

γ Range: 0 - 180DEG
 γ Interval: 1.0DEG
 Test System:EVERFINE GO-R5000_V2 SYSTEM V2.0.284
 Humidity:40%
 Test Distance:1.900m [K=0.6137]
 Remarks: